

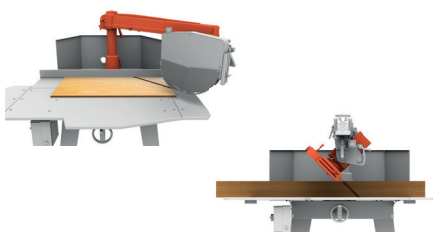
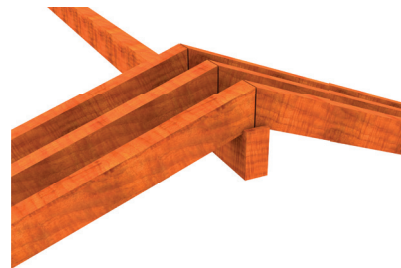


*Manual,  
radial-arm,  
crosscut saw*



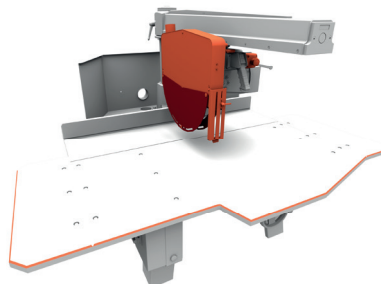
## BEST 700 S

For straight (90°), miter (0° to 45°- left) cross cutting and bevel cutting at 45° left and right, of wooden-based panels and solid wood boards up to 3mt. For furniture manufacturing and joinery.



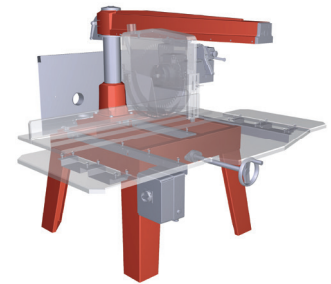
### VERSATILE

Swivelling arm up to 45° left and right and left tilting cutting-head (0° to 45° with stop and lock at any intermediate angle) allow many different cutting operations for the greatest versatility.



### SAFE

Sound-insulated, full-cover blade guard with safety microswitch, anti-kickback, well-dimensioned working bench and emergency button definitively contribute to the operator safety during the cutting process.



### SOLID AND ACCURATE

Rugged steel construction, arm and base made of cast iron. Interchangeable and tempered-steel made guides. Cutting head sliding on 8 ball bearings for a smooth, precise and effortless carriage movement.



***Small footprint : well suited to small workshops***



***Easy to use***



***Versatile***



***Useful complement to panel saws***



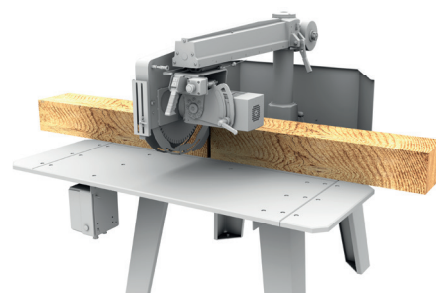
## BEST 700 S SERVICE

Worldwide after-sale service.

Real-time, on-line remote assistance through a dedicated augmented reality APP.  
Spare-parts availability for up to 10 years, shipment within 24 hrs

## DATA SHEET

Max. cutting height:	200 mm
Max. cutting width	570 x 20 h mm
Min. cutting width	400 x 200 h mm
Max. length of workpiece	unlimited
Max. cutting width for ripping	not allowed
Height of blade at 45° from the table	0 - 135 mm
Min. and Max. cutting width at 45° (right)	270 - 400 mm
Min. and Max. cutting width at 45° (left)	80 - 210 mm
Height of blade from working bench	0 - 40 mm
Blade diameter	565 mm
Blade bore diameter	30 mm
Motor	HP / KW 7,5/5,5 RPM 2800
Working bench dimensions	1870x1108 x 25 mm
Diameter of dust collection nozzle on blade guard	60 mm
Diameter of dust collection nozzle on rear hood	100 mm ( n.2)
Overall dimensions of full- assembled machine and net weight	1870 x 1640 x 1530 mm / Kg 340
Package dimensions and gross weight	1500 x 1000 x 1600 mm 390kg
Dimensions and gross weight half assembled machine	1700 x 1250 x 1190 - 410 Kg



### TOP OF THE RANGE

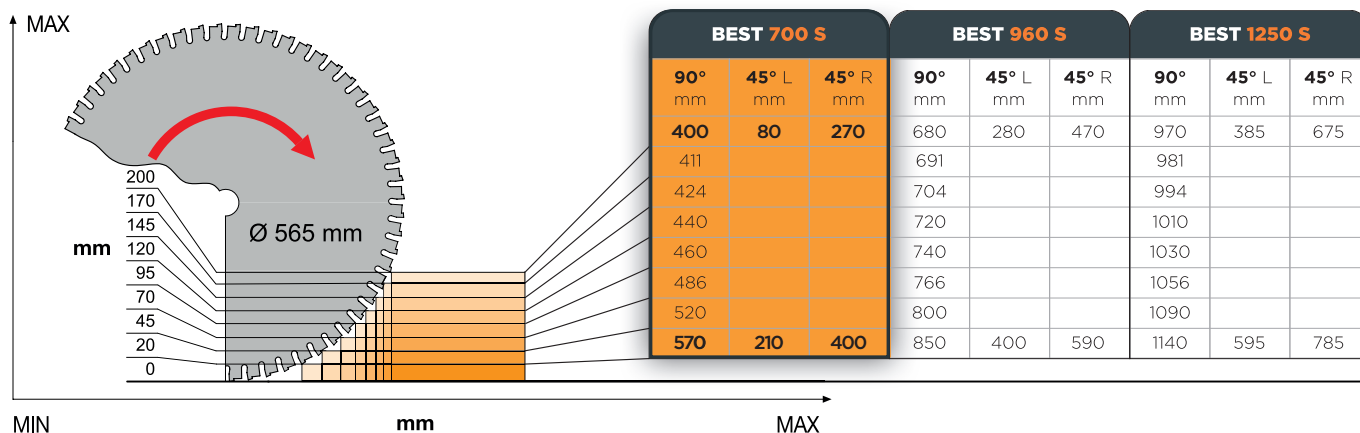
**7,5 HP Motor and max. cutting height up to 200 mm** make this machine ideal for carrying out heavy-duty working process, like cutting of beams and/or different types of building structures made of wood.



### CUTTING HEIGHT

### CUTTING

### WIDTH



### SERVICE

+39 0571 635 433

service@maggi-technology.com

### MAGGI TECHNOLOGY

Via delle Regioni, 299  
50052 Certaldo (Firenze) Italia

### SALES

+39 0571 635 474

sales@maggi-technology.com

